



# PUZZLE

NTSC U/C

# PlayStation



# CROSSROAD CRISIS

TM



SLUS-01342  
01342

## **WARNING: READ BEFORE USING YOUR PLAYSTATION® GAME CONSOLE.**

A very small percentage of individuals may experience epileptic seizures when exposed to certain light patterns or flashing lights. Exposure to certain patterns or backgrounds on a television screen or while playing video games, including games played on the PlayStation game console, may induce an epileptic seizure in these individuals. Certain conditions may induce previously undetected epileptic symptoms even in persons who have no history of prior seizures or epilepsy. If you, or anyone in your family, has an epileptic condition, consult your physician prior to playing. If you experience any of the following symptoms while playing a video game – dizziness, altered vision, eye or muscle twitches, loss of awareness, disorientation, any involuntary movement, or convulsions – IMMEDIATELY discontinue use and consult your physician before resuming play.

## **WARNING TO OWNERS OF PROJECTION TELEVISIONS:**

Do not connect your PlayStation game console to a projection TV without first consulting the user manual for your projection TV, unless it is of the LCD type. Otherwise, it may permanently damage your TV screen.

## **USE OF UNOFFICIAL PRODUCT:**

The use of unofficial products and peripherals may damage your PlayStation game console and invalidate your console warranty.

## **HANDLING YOUR PLAYSTATION DISC:**

- This compact disc is intended for use only with the PlayStation game console.
- Do not bend it, crush it or submerge it in liquids.
- Do not leave it in direct sunlight or near a radiator or other source of heat.
- Be sure to take an occasional rest break during extended play.
- Keep this compact disc clean. Always hold the disc by the edges and keep it in its protective case when not in use. Clean the disc with a lint-free, soft, dry cloth, wiping in straight lines from center to outer edge. Never use solvents or abrasive cleaners.



# **CONTENTS**

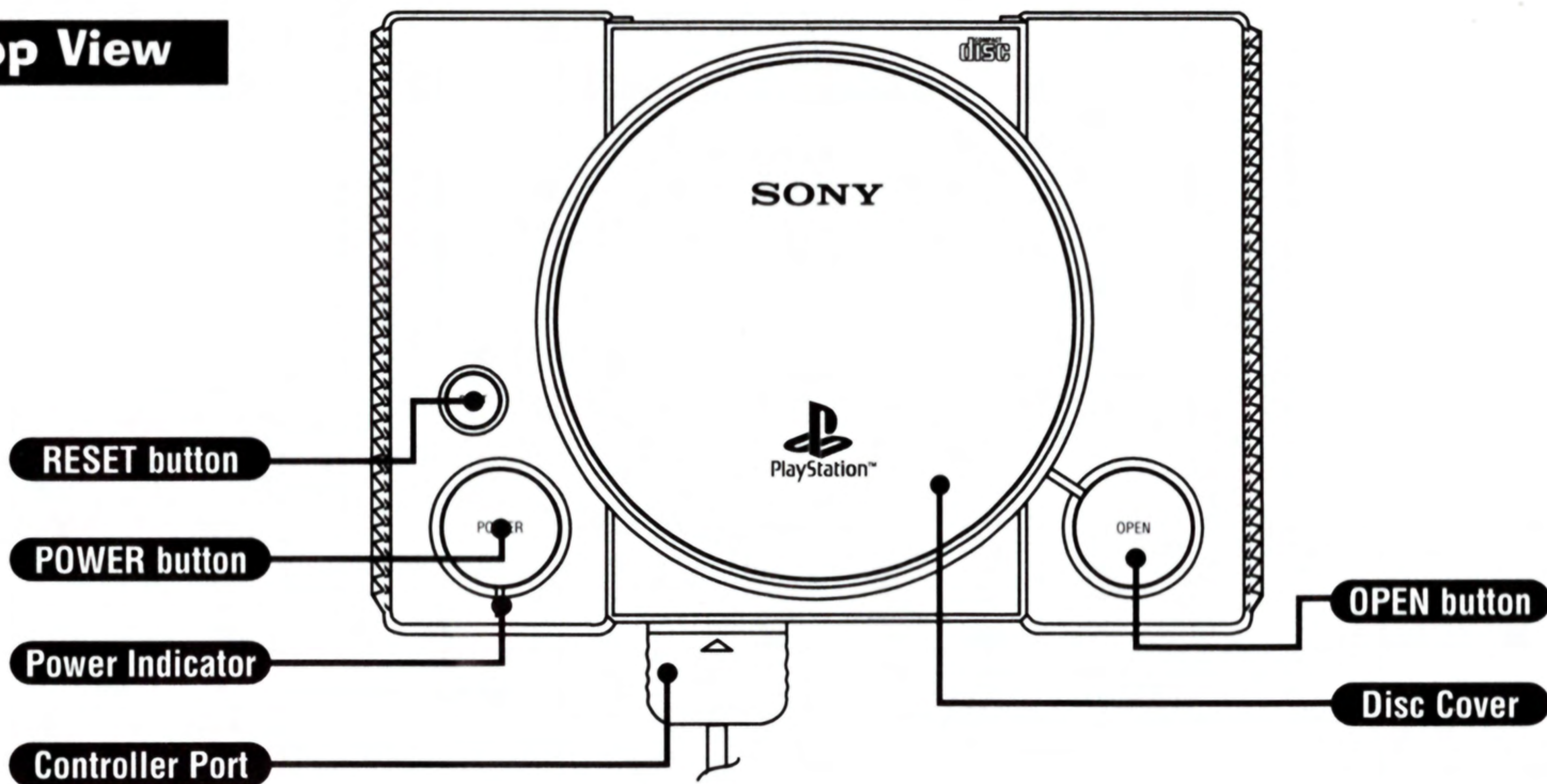
<b>Console Instructions .....</b>	<b>2</b>
<b>Operating Instructions .....</b>	<b>3</b>
<b>Story .....</b>	<b>4</b>
<b>Game Screen .....</b>	<b>5</b>
<b>How to Play .....</b>	<b>6</b>
<b>Erasing tiles &amp; Techniques .....</b>	<b>7</b>



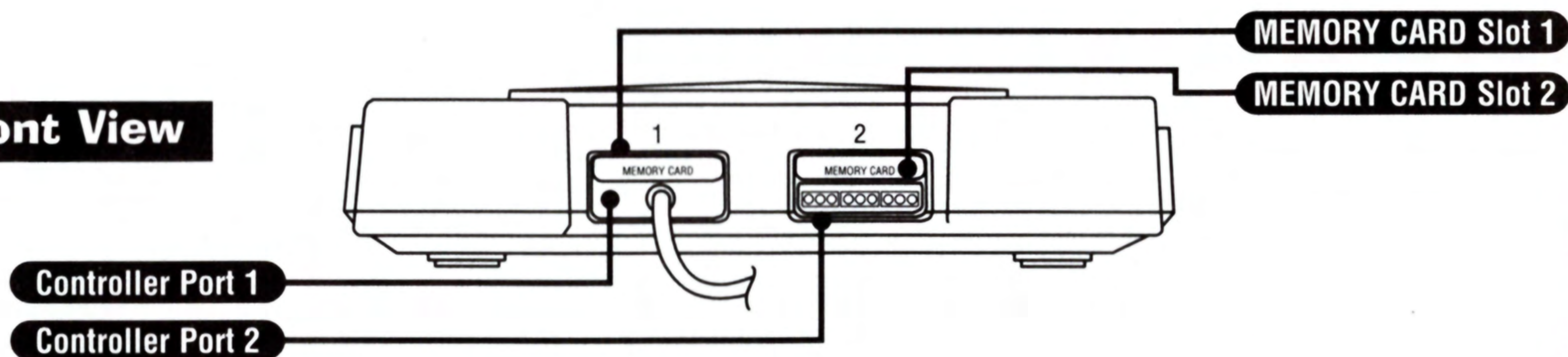


# CONSOLE INSTRUCTIONS

## Top View



## Front View

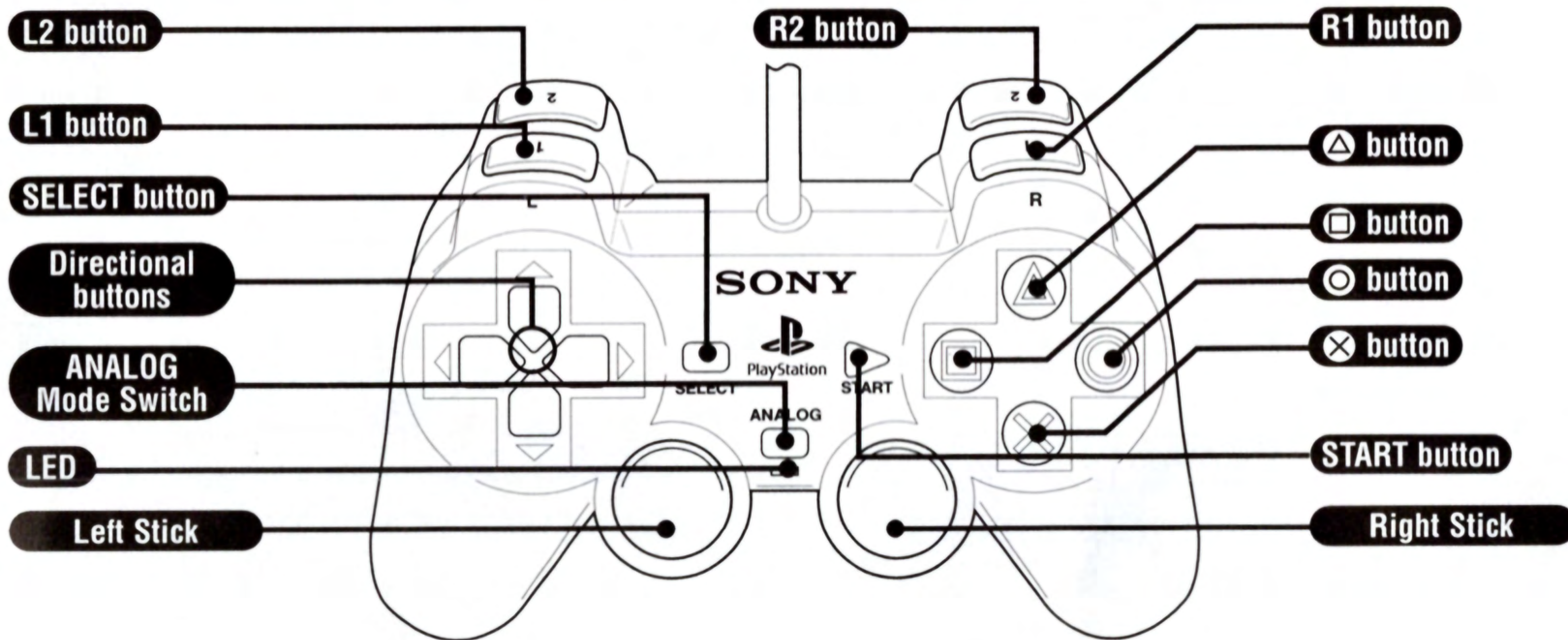


Set up your PlayStation game console according to the instructions in its Instruction Manual. Make sure the power is off before inserting or removing a compact disc. Insert the CROSSROAD CRISIS disc and close the disc cover. Insert game controllers and turn on the PlayStation game console. Follow on-screen instructions to start a game.



# OPERATING INSTRUCTIONS 3

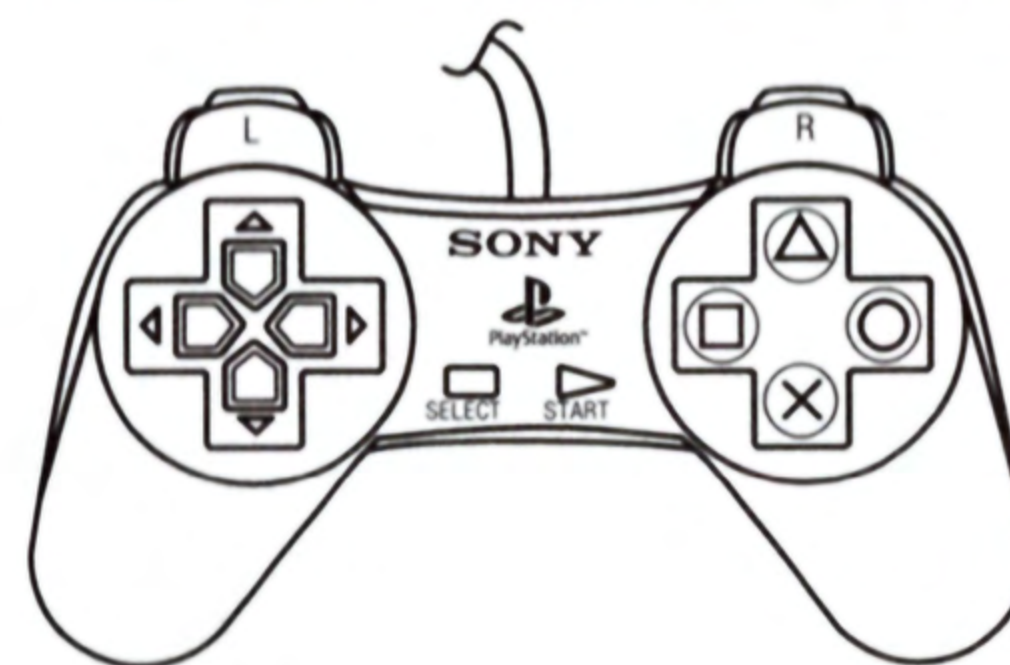
## DUALSHOCK™ analog controller



	Game Screen
Directional button ← → ↑ ↓	Move the cursor
○ + R2 button	Rotate tile 90 degrees to the right
□ + L2 button	Rotate tile 90 degrees to the left
△ + L1/R1 buttons	Increase Tic Tac Chicken's speed
× + Directional buttons	Move tiles around the board
START button	Pause
○ button	Cancel
× button	Confirm

Note: Compatible only in Digital and Vibration mode. Vibration mode ON / OFF can be selected at option menu.

## Digital Controller



Note: You may have a controller that looks like this, if so please follow the digital instructions outlined above.



## **STORY**

**One day an egg fell from the sky and out came a baby chick. The little chick had no idea how he got to the land of the moving tiles, but he knows one thing – he wants to go home.**

**Many dangers await the baby Tic Tac Chicken and he surely needs your help in order to get past them. Can you guide the little fellow safely home?**





# GAME SCREEN

5

Next available tile

Current score

Stage number

Goal mark

Cursor

Displays the number of baby chicks left.

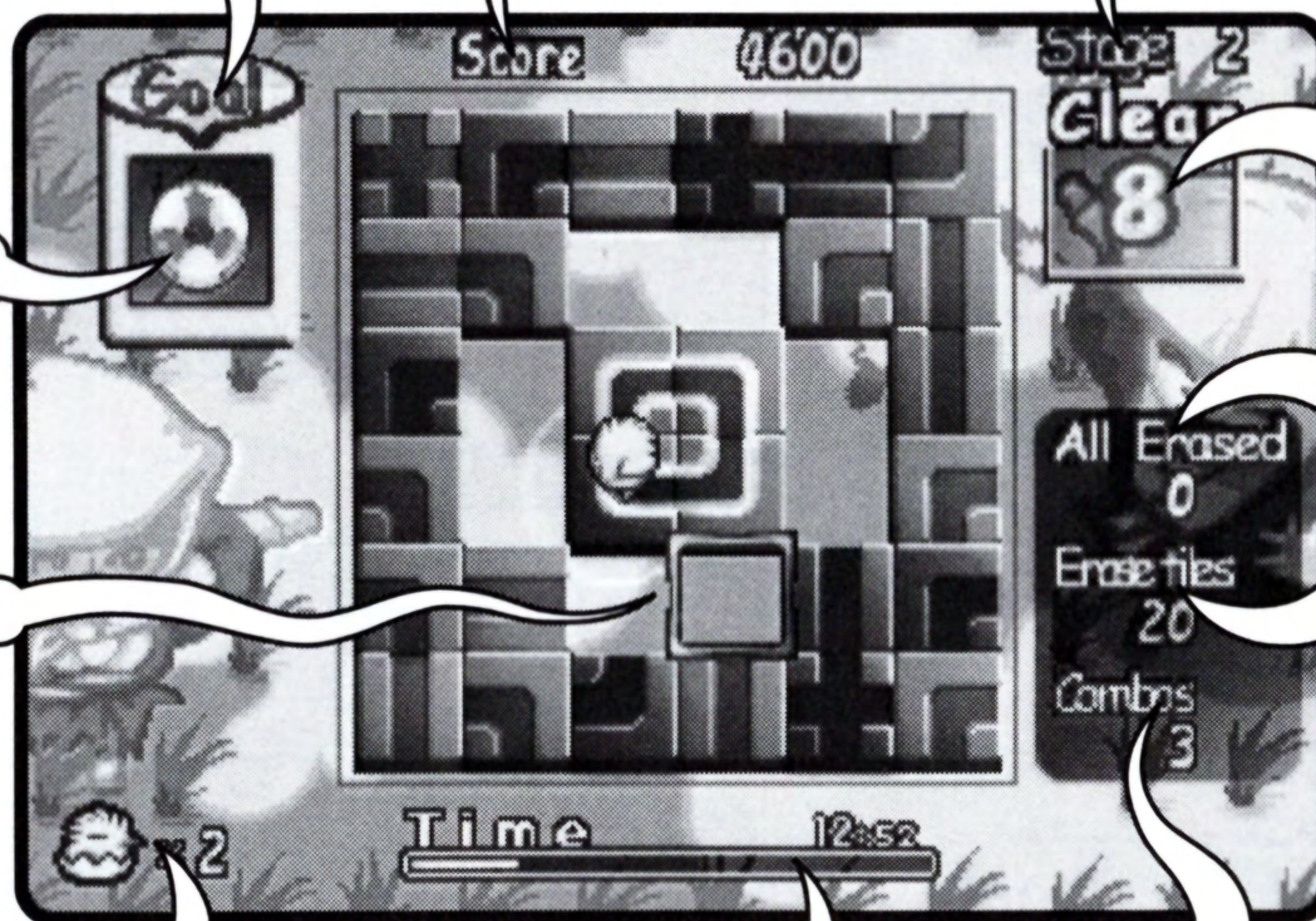
Time limit bar

Displays highest number of titles player has erased simultaneously. (Combo)

Displays required # of tile(s) player needs to erase in order to release the goal mark.

Displays how many times a player has erased all of the tiles when clearing the stages.

Displays total number of title(s) player has erased.



## Starting Game

Insert the Crossroad Crisis disc into the PlayStation® game console, then push the **START** button at title screen. Select Play mode and **X** button to confirm. When playing with save data, select [LOAD] from the Option menu.



## HOW TO PLAY

### Single Mode

This is for one player mode. Each stage has a requirement for the number of tiles that must disappear before the goal appears.

### Select Game Mode



Single Mode

VS Mode

★ 1 Player Mode ★

### Beginner mode

This mode is made up of three stages. Before player starts the game, a tutorial explains how to play the game.

### Select Game Mode



Beginner Mode

Clear Mode



★ 1 Player Mode ★  
Total 10 stages

### Clear mode

This mode is made up of ten stages. Try to clear all stages to let the baby chick make it home.

### Select Game Mode



Single Mode



VS Mode

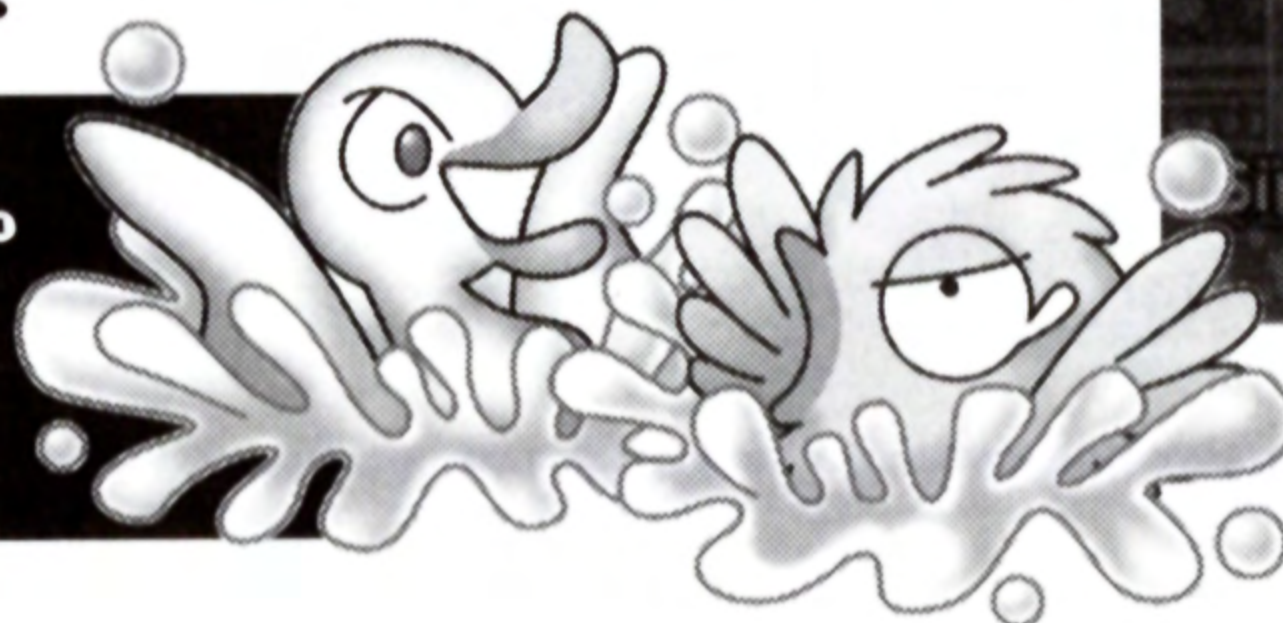
★ 2 Player Mode ★

### VS. Mode

Player may play with a friend in this VS mode. Player 1 controls the baby chick, and Player 2 controls a baby duck.

### Game Over

When the baby chick falls into the water, the player loses one baby chick. Once player loses all baby chicks, the game is over.

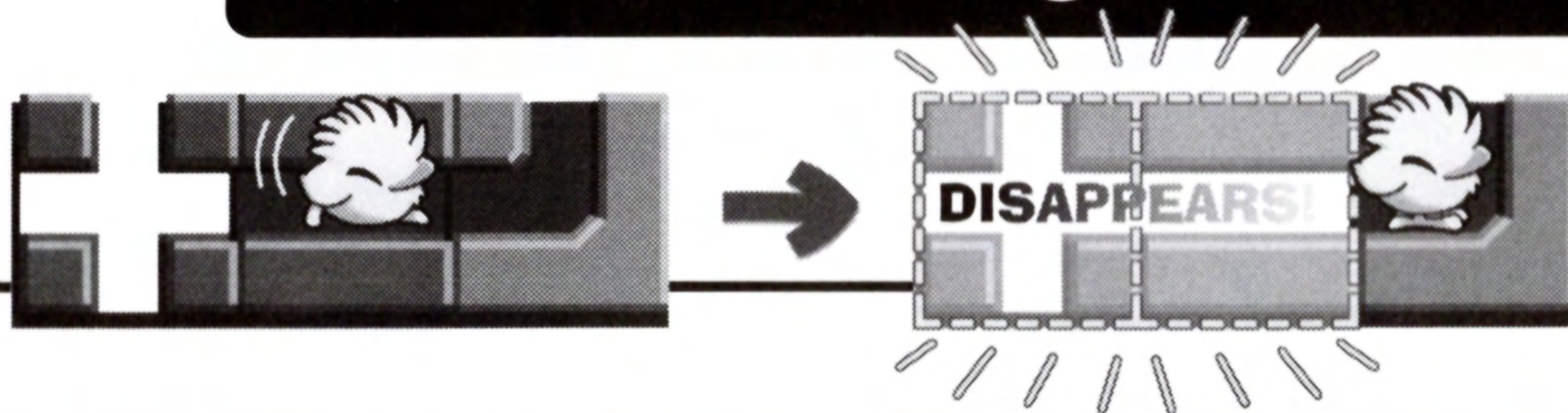






## **ERASING TILES & TECHNIQUES 7**

### **Erasing Tiles**



**When the baby chick walks over 2 or more tiles of the same color in a row, all of these tiles disappear.**

### **Techniques**

**1**

**You can move and/or rotate the tile even if baby chick is on it.**

**2**

**When time is running short, try moving multiple tiles at once to speed things up.**

**3**

**When the paths on the tiles do not connect, the baby chick reverses his direction. Sometimes a good strategy is to block off certain areas that could prove difficult or dangerous. If the baby chick reverses directions on a tile, once he leaves that tile, it disappears.**

**4**

**When the baby chick makes a U-turn and walks over the same tile(s) he just passed, these tiles are also erased.**

**5**

**Once you have erased the necessary tiles, the goal number disappears from the screen and a "Life Preserver" appears in the play area. Move the life preserver as close to the path of the baby chick as possible so he can walk into it. The baby chick must enter the life preserver before time runs out for you to complete the level.**



# NOTES

A series of horizontal dashed lines for writing notes, spanning the width of the page below the header.

## **CUSTOMER SERVICE**

A1 Games is a division of Agetec, Inc.

A1 Games warrants to the original purchaser of this A1 Games product that the medium on which this software program is recorded is free from defects in materials and workmanship for a period of ninety (90) days from the date of purchase. A1 Games agrees for a period of ninety (90) days to either repair or replace, at its option, the A1 Games product. You must call (408) 736-8001 to receive instructions to obtain repair/replacement services.

This warranty shall not be applicable and shall be void if the defect in the A1 Games product has arisen through abuse, unreasonable use, mistreatment or neglect. **THIS WARRANTY IS IN LIEU OF ALL OTHER WARRANTIES AND NO OTHER REPRESENTATIONS OR CLAIMS OF ANY NATURE SHALL BE BINDING ON OR OBLIGATE A1 GAMES. ANY IMPLIED WARRANTIES APPLICABLE TO THIS SOFTWARE PRODUCT, INCLUDING WARRANTIES OF MERCHANTABILITY AND FITNESS FOR A PARTICULAR PURPOSE, ARE LIMITED TO THE NINETY (90) DAY PERIOD DESCRIBED ABOVE. IN NO EVENT WILL A1 GAMES BE LIABLE FOR INCIDENTAL OR CONSEQUENTIAL DAMAGES RESULTING FROM POSSESSION, USE, OR MALFUNCTION OF THE AGETEC, INC. SOFTWARE PRODUCT.**

Some states do not allow limitations as to how long an implied warranty lasts and/or exclusions or limitations of consequential damages, so the above limitations and/or exclusions of liability may not apply to you. This warranty gives you specific legal rights, and you may also have other rights which vary from state to state.

**Repair/Service After Expiration of Warranty** - If your game disc requires repair after expiration of the 90 - day Limited Warranty Period, you may contact the Customer Service Department at the number listed below. You will be advised of the estimated cost of repair and the shipping instructions.

**A1 GAMES Customer Service Department/Technical Support Line (408) 736-8001** - Call this number for help in installing or operating our products or for general product questions. Representatives are available Monday-Friday, 8:30am-4:00pm Pacific Time. There is no charge for this service.

**A1 GAMES Online at <http://www.a1games.com>** - Our news is always cool! Visit our web-site and find out what's happening at A1 Games - new titles, new products, and fresh tidbits about the new gaming world!

**Look for these other exciting  
PlayStation® game console titles  
from agetec!**



**A1**  
GAMES™

Look for other exciting A1 Games titles in these categories.

-  **SPORTS**
-  **FIGHTING**
-  **ACTION**
-  **ADVENTURE**
-  **PUZZLE**
-  **ROLE PLAY**
-  **SIMULATION**
-  **BOARD GAME**



**agetec**™  
www.agetec.com

**A1**  
GAMES™  
www.a1games.com

Distributed Exclusively by

**TOMMO**™

www.tommo.com

**SUCCESS**™

A1 Games P.O. Box 70158, Sunnyvale, CA 94086-0158.

©2000, 2001 SUCCESS. All rights reserved. SUCCESS and the SUCCESS logo are trademarks of SUCCESS Corporation. Agetec and the Agetec logo, A1 Games and the A1 Games logo, Crossroad Crisis and the Crossroad Crisis logo are trademarks of Agetec, Inc.

Licensed for use with the PlayStation game console. PlayStation and the PlayStation logos are registered trademarks of Sony Computer Entertainment Inc. The ratings icon is a trademark of the Interactive Digital Software Association.

Manufactured and printed in the U.S.A. THIS SOFTWARE IS COMPATIBLE WITH PLAYSTATION GAME CONSOLES WITH THE NTSC U/C DESIGNATION. U.S. AND FOREIGN PATENTS PENDING.

